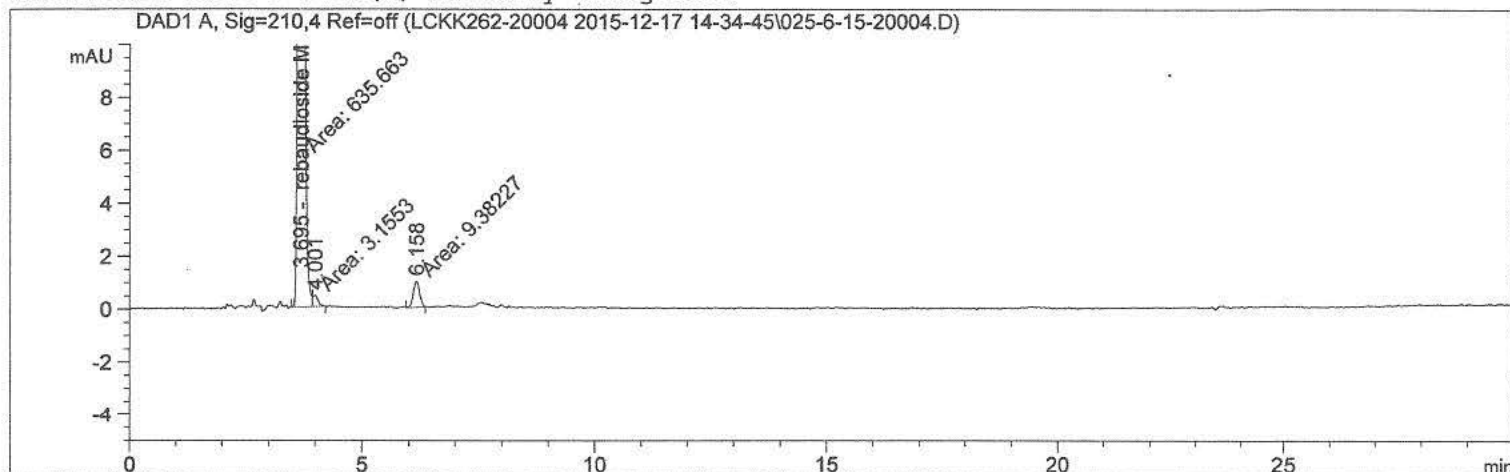


SAMPLE CHROMATOGRAMS

AREA PERCENT RESULTS

```
=====
Acq. Operator   :                               Seq. Line :   25
Acq. Instrument : HPLC-05                       Location  :    6
Injection Date  : 12/18/2015 3:35:31 AM          Inj       :    1
                                                Inj Volume: 5.000 µl
Acq. Method     : D:\Chem32\4\Data\LCKK262-20004 2015-12-17 14-34-45\LCKK262.M
Last changed    : 12/18/2015 3:02:17 AM by
Analysis Method : D:\Chem32\4\Data\LCKK262-20004 2015-12-17 14-34-45\LCKK262.M (Sequence
Method)
Last changed    : 12/22/2015 12:27:36 PM by
Method Info     : JECFA kk262
=====
```

```
ECM Server      : http://us05apvp001/ecmwg
ECM Operator    :
ECM Path        : \Petaluma\LC\HPLC-05\Data\LCKK262-20004 2015-12-17 14-34-45.SC.SSIzip
ECM Version     : 7 (modified after loading)
Additional Info  : Peak(s) manually integrated
=====
```



Area Percent Report

```
Sorted By      : Signal
Calib. Data Modified : Tuesday, December 22, 2015 7:55:11 AM
Multiplier     : 1.0000
Dilution       : 40.0000
Sample Amount   : 32.11000 [mg/ml] (not used in calc.)
Do not use Multiplier & Dilution Factor with ISTDs
=====
```

Signal 1: DAD1 A, Sig=210,4 Ref=off

Peak #	RetTime [min]	Type	Width [min]	Area [mAU*s]	Area %	Name	Average of 3	Std Dev	7.RSD
1	3.322		0.0000	0.00000	0.0000	rebaudioside D			
2	3.695	MF	0.1041	635.66278	98.0658	rebaudioside M	98.106	0.07226	0.073661
3	4.001	FM	0.1245	3.15530	0.4868	?			
4	6.158	MM	0.1582	9.38227	1.4474	?			
5	6.904		0.0000	0.00000	0.0000	rebaudioside A			
6	7.339		0.0000	0.00000	0.0000	stevioside			
7	8.764		0.0000	0.00000	0.0000	rebaudioside F			
8	9.625		0.0000	0.00000	0.0000	rebaudioside C			
9	10.521		0.0000	0.00000	0.0000	dulcoside A			

Sum 12-22-15

Peak #	RetTime [min]	Type	Width [min]	Area [mAU*s]	Area %	Name
10	14.005		0.0000	0.00000	0.0000	rubusoside
11	19.549		0.0000	0.00000	0.0000	rebaudioside B
12	20.995		0.0000	0.00000	0.0000	steviolbioside

Totals : 648.20035

2 Warnings or Errors :

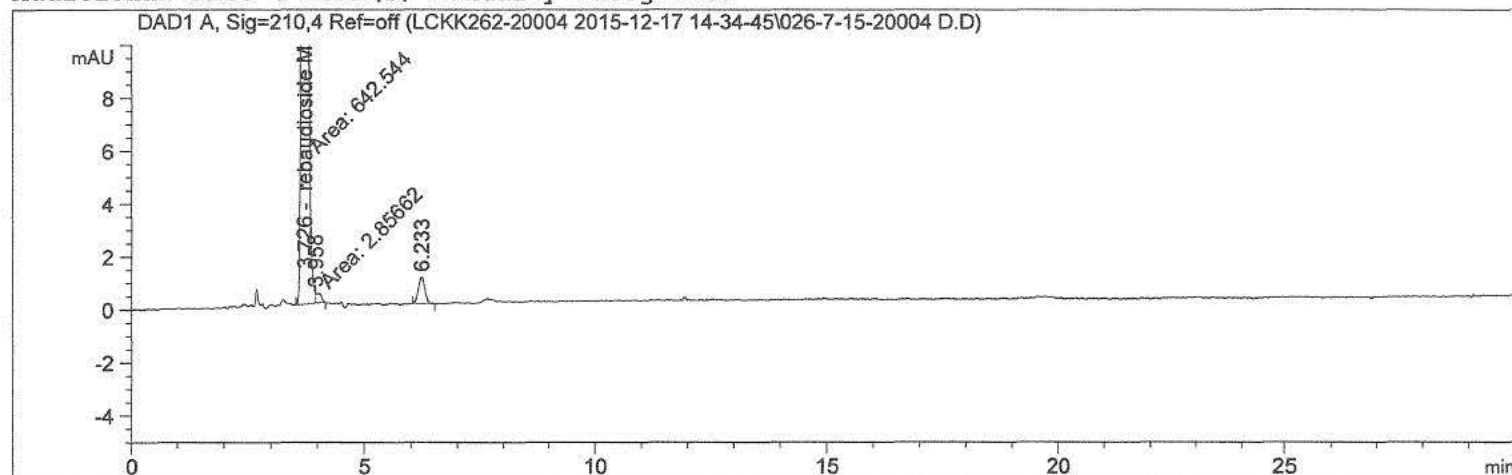
Warning : Calibration warnings (see calibration table listing)

Warning : Calibrated compound(s) not found

=====
*** End of Report ***

```
=====
Acq. Operator   :                               Seq. Line :   26
Acq. Instrument : HPLC-05                       Location  :    7
Injection Date  : 12/18/2015 4:07:15 AM          Inj       :    1
                                                Inj Volume: 5.000 µl
Acq. Method     : D:\Chem32\4\Data\LCKK262-20004 2015-12-17 14-34-45\LCKK262.M
Last changed    : 12/18/2015 3:02:17 AM by
Analysis Method : D:\Chem32\4\Data\LCKK262-20004 2015-12-17 14-34-45\LCKK262.M (Sequence
                  Method)
Last changed    : 12/22/2015 12:27:36 PM by
Method Info     : JECFA kk262

ECM Server      : http://us05apvp001/ecmwg
ECM Operator    :
ECM Path        : \Petaluma\LC\HPLC-05\Data\LCKK262-20004 2015-12-17 14-34-45.SC.SSIzip
ECM Version     : 7 (modified after loading)
Additional Info  : Peak(s) manually integrated
=====
```



```
=====
                          Area Percent Report
=====
```

```
Sorted By           :      Signal
Calib. Data Modified :      Tuesday, December 22, 2015 7:55:11 AM
Multiplier          :      1.0000
Dilution            :      40.0000
Sample Amount       :      32.10000 [mg/ml] (not used in calc.)
Do not use Multiplier & Dilution Factor with ISTDs
```

Signal 1: DAD1 A, Sig=210,4 Ref=off

Peak #	RetTime [min]	Type	Width [min]	Area [mAU*s]	Area %	Name
1	3.322		0.0000	0.00000	0.0000	rebaudioside D
2	3.726	MF	0.1049	642.54413	98.0633	rebaudioside M
3	3.958	FM	0.1221	2.85662	0.4360	?
4	6.233	BB	0.1472	9.83362	1.5008	?
5	6.904		0.0000	0.00000	0.0000	rebaudioside A
6	7.339		0.0000	0.00000	0.0000	stevioside
7	8.764		0.0000	0.00000	0.0000	rebaudioside F
8	9.625		0.0000	0.00000	0.0000	rebaudioside C
9	10.521		0.0000	0.00000	0.0000	dulcoside A

Sample Name: 15-20004 D

Peak #	RetTime [min]	Type	Width [min]	Area [mAU*s]	Area %	Name
10	14.005		0.0000	0.00000	0.0000	rubusoside
11	19.549		0.0000	0.00000	0.0000	rebaudioside B
12	20.995		0.0000	0.00000	0.0000	steviolbioside

Totals : 655.23437

2 Warnings or Errors :

Warning : Calibration warnings (see calibration table listing)

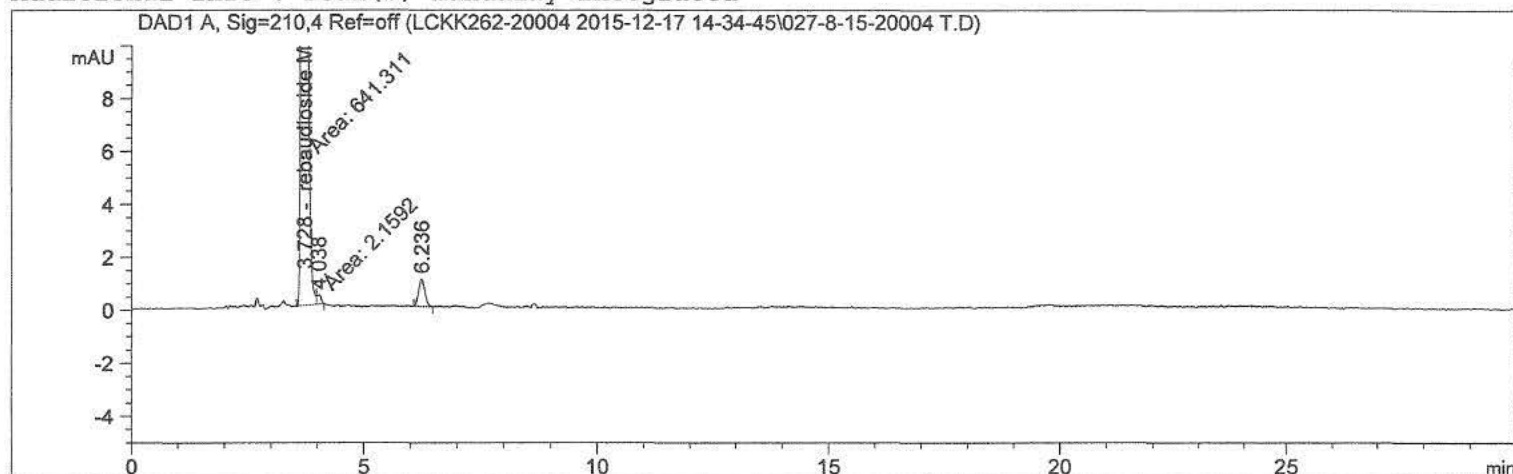
Warning : Calibrated compound(s) not found

*** End of Report ***

=====

Acq. Operator	:		Seq. Line	:	27
Acq. Instrument	:	HPLC-05	Location	:	8
Injection Date	:	12/18/2015 4:38:55 AM	Inj	:	1
			Inj Volume	:	5.000 µl
Acq. Method	:	D:\Chem32\4\Data\LCKK262-20004 2015-12-17 14-34-45\LCKK262.M			
Last changed	:	12/18/2015 3:02:17 AM by	Mathys		
Analysis Method	:	D:\Chem32\4\Data\LCKK262-20004 2015-12-17 14-34-45\LCKK262.M (Sequence Method)			
Last changed	:	12/22/2015 12:27:36 PM by			
Method Info	:	JECFA kk262			

ECM Server : http://us05apvp001/ecmwg
ECM Operator :
ECM Path : \Petaluma\LC\HPLC-05\Data\LCKK262-20004 2015-12-17 14-34-45.SC.SSIzip
ECM Version : 7 (modified after loading)
Additional Info : Peak(s) manually integrated



=====
Area Percent Report
=====

Sorted By : Signal
Calib. Data Modified : Tuesday, December 22, 2015 7:55:11 AM
Multiplier : 1.0000
Dilution : 40.0000
Sample Amount : 32.11000 [mg/ml] (not used in calc.)
Do not use Multiplier & Dilution Factor with ISTDs

Signal 1: DAD1 A, Sig=210,4 Ref=off

Peak #	RetTime [min]	Type	Width [min]	Area [mAU*s]	Area %	Name
1	3.322		0.0000	0.00000	0.0000	rebaudioside D
2	3.728	MF	0.1048	641.31146	98.1897	rebaudioside M
3	4.038	FM	0.1023	2.15920	0.3306	?
4	6.236	BB	0.1428	9.66454	1.4797	?
5	6.904		0.0000	0.00000	0.0000	rebaudioside A
6	7.339		0.0000	0.00000	0.0000	stevioside
7	8.764		0.0000	0.00000	0.0000	rebaudioside F
8	9.625		0.0000	0.00000	0.0000	rebaudioside C
9	10.521		0.0000	0.00000	0.0000	dulcoside A

Peak #	RetTime [min]	Type	Width [min]	Area [mAU*s]	Area %	Name
10	14.005		0.0000	0.00000	0.0000	rubusoside
11	19.549		0.0000	0.00000	0.0000	rebaudioside B
12	20.995		0.0000	0.00000	0.0000	steviolbioside

Totals : 653.13520

2 Warnings or Errors :

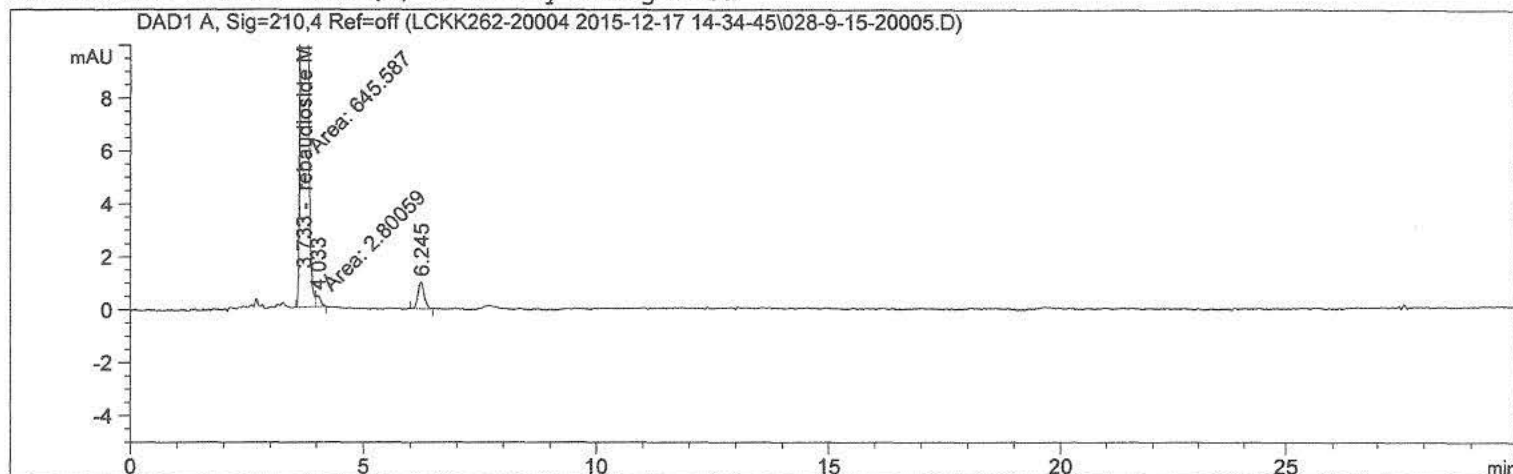
Warning : Calibration warnings (see calibration table listing)

Warning : Calibrated compound(s) not found

*** End of Report ***

```
=====
Acq. Operator   :                               Seq. Line :   28
Acq. Instrument : HPLC-05                       Location  :    9
Injection Date  : 12/18/2015 5:10:35 AM          Inj       :    1
                                                Inj Volume: 5.000 µl
Acq. Method     : D:\Chem32\4\Data\LCKK262-20004 2015-12-17 14-34-45\LCKK262.M
Last changed    : 12/18/2015 3:02:17 AM by
Analysis Method : D:\Chem32\4\Data\LCKK262-20004 2015-12-17 14-34-45\LCKK262.M (Sequence
Method)
Last changed    : 12/22/2015 12:27:36 PM by
Method Info     : JECFA kk262
=====
```

```
ECM Server      : http://us05apvp001/ecmwg
ECM Operator    :
ECM Path        : \Petaluma\LC\HPLC-05\Data\LCKK262-20004 2015-12-17 14-34-45.SC.SSIzip
ECM Version     : 7 (modified after loading)
Additional Info : Peak(s) manually integrated
=====
```



Area Percent Report

```
Sorted By      : Signal
Calib. Data Modified : Tuesday, December 22, 2015 7:55:11 AM
Multiplier     : 1.0000
Dilution       : 40.0000
Sample Amount  : 32.12000 [mg/ml] (not used in calc.)
Do not use Multiplier & Dilution Factor with ISTDs
=====
```

Signal 1: DAD1 A, Sig=210,4 Ref=off

Peak #	RetTime [min]	Type	Width [min]	Area [mAU*s]	Area %	Name	Average	Std Dev	%RSD
1	3.322		0.0000	0.00000	0.0000	rebaudioside D			
2	3.733	MF	0.1048	645.58691	98.0809	rebaudioside M	97.984	0.08388	0.85602
3	4.033	FM	0.1137	2.80059	0.4255	?			
4	6.245	BB	0.1520	9.83095	1.4936	?			
5	6.904		0.0000	0.00000	0.0000	rebaudioside A			
6	7.339		0.0000	0.00000	0.0000	stevioside			
7	8.764		0.0000	0.00000	0.0000	rebaudioside F			
8	9.625		0.0000	0.00000	0.0000	rebaudioside C			
9	10.521		0.0000	0.00000	0.0000	dulcoside A			

Sum 12-22-15

Sample Name: 15-20005

Peak #	RetTime [min]	Type	Width [min]	Area [mAU*s]	Area %	Name
10	14.005		0.0000	0.00000	0.0000	rubusoside
11	19.549		0.0000	0.00000	0.0000	rebaudioside B
12	20.995		0.0000	0.00000	0.0000	steviolbioside

Totals : 658.21846

2 Warnings or Errors :

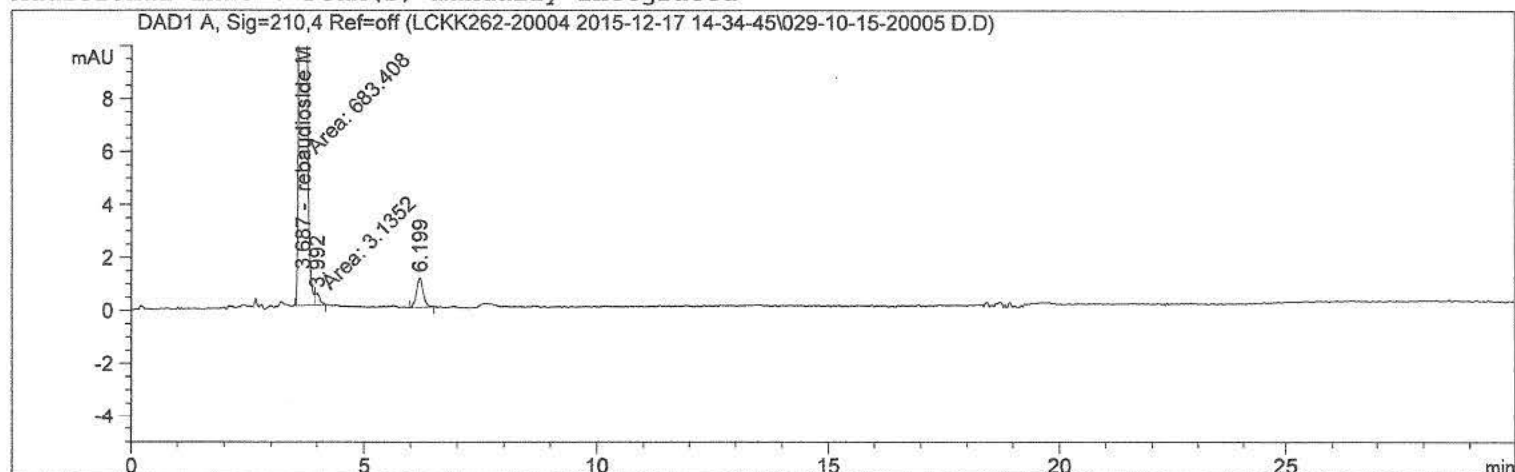
Warning : Calibration warnings (see calibration table listing)

Warning : Calibrated compound(s) not found

=====
*** End of Report ***

```
=====
Acq. Operator   :                               Seq. Line :   29
Acq. Instrument : HPLC-05                       Location  :   10
Injection Date  : 12/18/2015 5:42:16 AM          Inj       :    1
                                                Inj Volume: 5.000 µl
Acq. Method     : D:\Chem32\4\Data\LCKK262-20004 2015-12-17 14-34-45\LCKK262.M
Last changed    : 12/18/2015 3:02:17 AM by
Analysis Method : D:\Chem32\4\Data\LCKK262-20004 2015-12-17 14-34-45\LCKK262.M (Sequence
                  Method)
Last changed    : 12/22/2015 12:33:41 PM by
Method Info     : JECFA kk262
=====
```

```
ECM Server      : http://us05apvp001/ecmwg
ECM Operator    :
ECM Path        : \Petaluma\LC\HPLC-05\Data\LCKK262-20004 2015-12-17 14-34-45.SC.SSIzip
ECM Version     : 7 (modified after loading)
Additional Info : Peak(s) manually integrated
=====
```



Area Percent Report

```
=====
Sorted By      : Signal
Calib. Data Modified : Tuesday, December 22, 2015 7:55:11 AM
Multiplier     : 1.0000
Dilution       : 40.0000
Sample Amount   : 34.22000 [mg/ml] (not used in calc.)
Do not use Multiplier & Dilution Factor with ISTDs
=====
```

Signal 1: DAD1 A, Sig=210,4 Ref=off

Peak #	RetTime [min]	Type	Width [min]	Area [mAU*s]	Area %	Name
1	3.322		0.0000	0.00000	0.0000	rebaudioside D
2	3.687	MF	0.1054	683.40796	97.9373	rebaudioside M
3	3.992	FM	0.1163	3.13520	0.4493	?
4	6.199	BB	0.1511	11.25851	1.6134	?
5	6.904		0.0000	0.00000	0.0000	rebaudioside A
6	7.339		0.0000	0.00000	0.0000	stevioside
7	8.764		0.0000	0.00000	0.0000	rebaudioside F
8	9.625		0.0000	0.00000	0.0000	rebaudioside C
9	10.521		0.0000	0.00000	0.0000	dulcoside A

Peak #	RetTime [min]	Type	Width [min]	Area [mAU*s]	Area %	Name
10	14.005		0.0000	0.00000	0.0000	rubusoside
11	19.549		0.0000	0.00000	0.0000	rebaudioside B
12	20.995		0.0000	0.00000	0.0000	steviolbioside

Totals : 697.80167

2 Warnings or Errors :

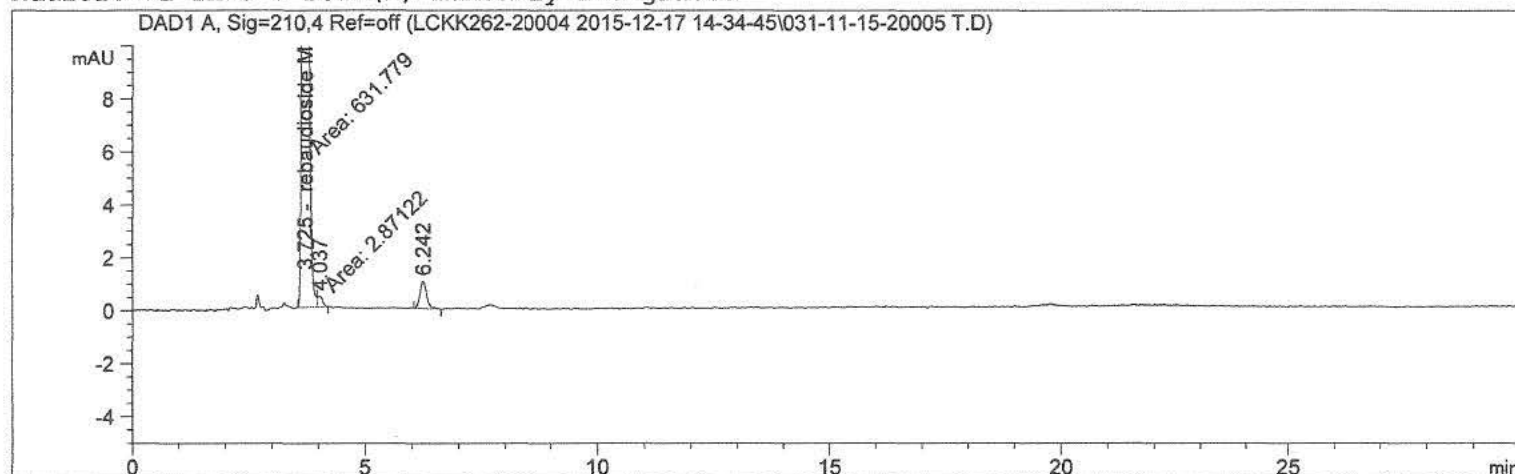
Warning : Calibration warnings (see calibration table listing)

Warning : Calibrated compound(s) not found

*** End of Report ***

```
=====
Acq. Operator   :                               Seq. Line :   31
Acq. Instrument : HPLC-05                       Location  :   11
Injection Date  : 12/18/2015 6:45:30 AM          Inj       :    1
                                                Inj Volume: 5.000 µl
Acq. Method     : D:\Chem32\4\Data\LCKK262-20004 2015-12-17 14-34-45\LCKK262.M
Last changed    : 12/18/2015 3:02:17 AM by
Analysis Method : D:\Chem32\4\Data\LCKK262-20004 2015-12-17 14-34-45\LCKK262.M (Sequence
Method)
Last changed    : 12/22/2015 12:33:41 PM by
Method Info     : JECFA kk262
=====
```

```
ECM Server      : http://us05apvp001/ecmwg
ECM Operator    :
ECM Path        : \Petaluma\LC\HPLC-05\Data\LCKK262-20004 2015-12-17 14-34-45.SC.SSIzip
ECM Version     : 7 (modified after loading)
Additional Info : Peak(s) manually integrated
=====
```



Area Percent Report

```
=====
Sorted By      : Signal
Calib. Data Modified : Tuesday, December 22, 2015 7:55:11 AM
Multiplier     : 1.0000
Dilution       : 40.0000
Sample Amount   : 31.66000 [mg/ml] (not used in calc.)
Do not use Multiplier & Dilution Factor with ISTDs
=====
```

Signal 1: DAD1 A, Sig=210,4 Ref=off

Peak #	RetTime [min]	Type	Width [min]	Area [mAU*s]	Area %	Name
1	3.322		0.0000	0.00000	0.0000	rebaudioside D
2	3.725	MF	0.1050	631.77856	97.9340	rebaudioside M
3	4.037	FM	0.1187	2.87122	0.4451	?
4	6.242	BB	0.1497	10.45685	1.6209	?
5	6.904		0.0000	0.00000	0.0000	rebaudioside A
6	7.339		0.0000	0.00000	0.0000	stevioside
7	8.764		0.0000	0.00000	0.0000	rebaudioside F
8	9.625		0.0000	0.00000	0.0000	rebaudioside C
9	10.521		0.0000	0.00000	0.0000	dulcoside A

Average Std Dev 1 RSD
@ SM 12-22-15

Peak #	RetTime [min]	Type	Width [min]	Area [mAU*s]	Area %	Name
10	14.005		0.0000	0.00000	0.0000	rubusoside
11	19.549		0.0000	0.00000	0.0000	rebaudioside B
12	20.995		0.0000	0.00000	0.0000	steviolbioside

Totals : 645.10663

2 Warnings or Errors :

Warning : Calibration warnings (see calibration table listing)

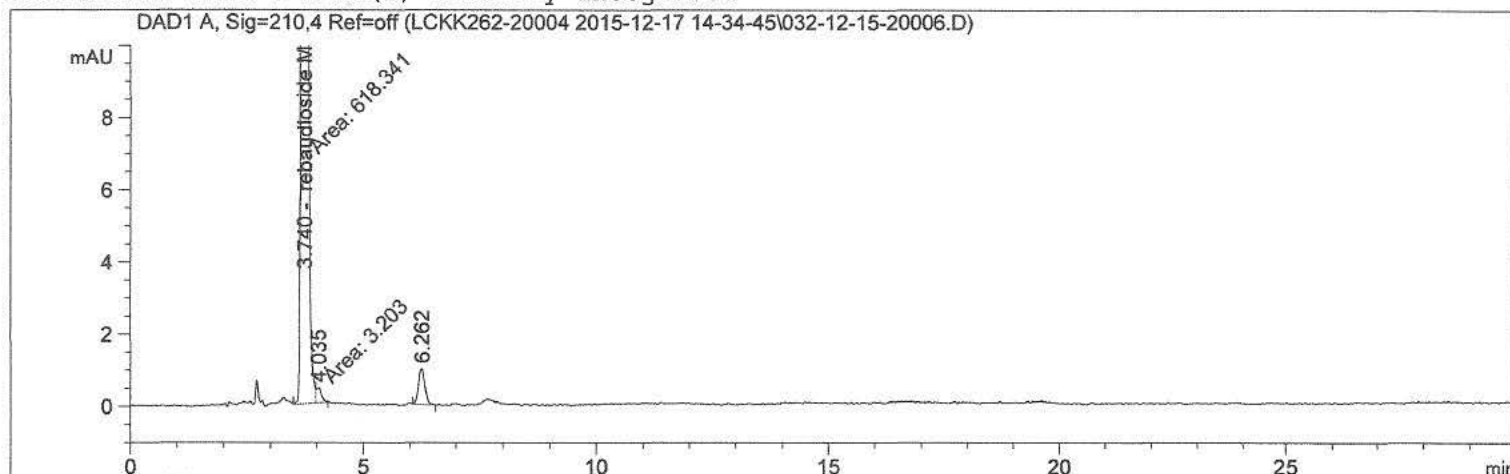
Warning : Calibrated compound(s) not found

=====

*** End of Report ***

```
=====
Acq. Operator   :                               Seq. Line :   32
Acq. Instrument : HPLC-05                       Location  :   12
Injection Date  : 12/18/2015 7:17:04 AM          Inj       :    1
                                           Inj Volume: 5.000 µl
Acq. Method     : D:\Chem32\4\Data\LCKK262-20004 2015-12-17 14-34-45\LCKK262.M
Last changed    : 12/18/2015 3:02:17 AM by
Analysis Method : D:\Chem32\4\Data\LCKK262-20004 2015-12-17 14-34-45\LCKK262.M (Sequence
Method)
Last changed    : 12/22/2015 12:35:59 PM by
Method Info     : JECFA kk262
=====
```

```
ECM Server      : http://us05apvp001/ecmwg
ECM Operator    :
ECM Path        : \Petaluma\LC\HPLC-05\Data\LCKK262-20004 2015-12-17 14-34-45.SC.SSIzip
ECM Version     : 7 (modified after loading)
Additional Info  : Peak(s) manually integrated
=====
```



Area Percent Report

```
=====
Sorted By      : Signal
Calib. Data Modified : Tuesday, December 22, 2015 7:55:11 AM
Multiplier     : 1.0000
Dilution       : 40.0000
Sample Amount   : 30.94000 [mg/ml] (not used in calc.)
Do not use Multiplier & Dilution Factor with ISTDs
=====
```

Signal 1: DAD1 A, Sig=210,4 Ref=off

Peak #	RetTime [min]	Type	Width [min]	Area [mAU*s]	Area %	Name	Average	Std Dev	7-RSD
1	3.322		0.0000	0.00000	0.0000	rebaudioside D			
2	3.740	MF	0.1050	618.34106	97.9960	rebaudioside M	98.000	0.062299	0.063571
3	4.035	FM	0.1282	3.20300	0.5076	?			
4	6.262	BB	0.1510	9.44223	1.4964	?			
5	6.904		0.0000	0.00000	0.0000	rebaudioside A			
6	7.339		0.0000	0.00000	0.0000	stevioside			
7	8.764		0.0000	0.00000	0.0000	rebaudioside F			
8	9.625		0.0000	0.00000	0.0000	rebaudioside C			
9	10.521		0.0000	0.00000	0.0000	dulcoside A			

Sample Name: 15-20006

Peak #	RetTime [min]	Type	Width [min]	Area [mAU*s]	Area %	Name
10	14.005		0.0000	0.00000	0.0000	rubusoside
11	19.549		0.0000	0.00000	0.0000	rebaudioside B
12	20.995		0.0000	0.00000	0.0000	steviolbioside

Totals : 630.98630

2 Warnings or Errors :

Warning : Calibration warnings (see calibration table listing)

Warning : Calibrated compound(s) not found

*** End of Report ***

Sample Name: 15-20006 D

```

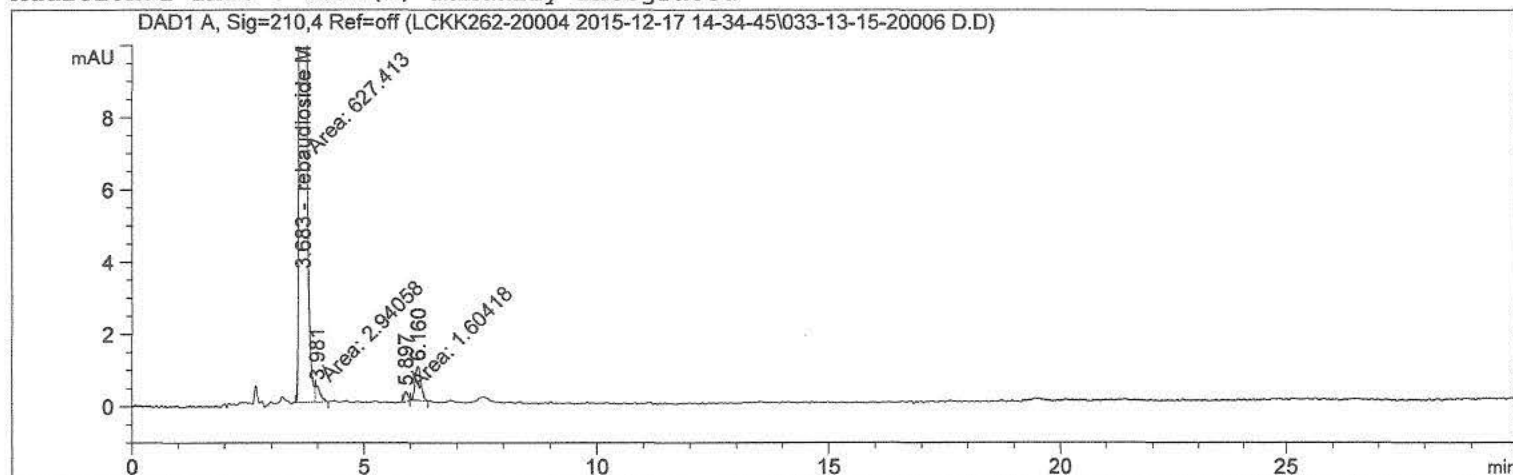
=====
Acq. Operator   :                               Seq. Line :   33
Acq. Instrument : HPLC-05                      Location  :   13
Injection Date  : 12/18/2015 7:48:40 AM         Inj       :    1
                                           Inj Volume: 5.000 µl
Acq. Method     : D:\Chem32\4\Data\LCKK262-20004 2015-12-17 14-34-45\LCKK262.M
Last changed    : 12/18/2015 3:02:17 AM by
Analysis Method : D:\Chem32\4\Data\LCKK262-20004 2015-12-17 14-34-45\LCKK262.M (Sequence
Method)
Last changed    : 12/22/2015 12:35:59 PM by
Method Info     : JECFA kk262

```

```

ECM Server      : http://us05apvp001/ecmwg
ECM Operator    :
ECM Path        : \Petaluma\LC\HPLC-05\Data\LCKK262-20004 2015-12-17 14-34-45.SC.SSIzip
ECM Version     : 7 (modified after loading)
Additional Info : Peak(s) manually integrated

```



```

=====
                          Area Percent Report
=====

```

```

Sorted By           :      Signal
Calib. Data Modified :      Tuesday, December 22, 2015 7:55:11 AM
Multiplier          :      1.0000
Dilution            :      40.0000
Sample Amount       :      31.60000 [mg/ml] (not used in calc.)
Do not use Multiplier & Dilution Factor with ISTDs

```

Signal 1: DAD1 A, Sig=210,4 Ref=off

Peak #	RetTime [min]	Type	Width [min]	Area [mAU*s]	Area %	Name
1	3.322		0.0000	0.00000	0.0000	rebaudioside D
2	3.683	MF	0.1037	627.41272	97.9399	rebaudioside M
3	3.981	FM	0.1100	2.94058	0.4590	?
4	5.897	MM	0.0967	1.60418	0.2504	?
5	6.160	BB	0.1419	8.65269	1.3507	?
6	6.904		0.0000	0.00000	0.0000	rebaudioside A
7	7.339		0.0000	0.00000	0.0000	stevioside
8	8.764		0.0000	0.00000	0.0000	rebaudioside F
9	9.625		0.0000	0.00000	0.0000	rebaudioside C

Sample Name: 15-20006 D

Peak #	RetTime [min]	Type	Width [min]	Area [mAU*s]	Area %	Name
10	10.521		0.0000	0.00000	0.0000	dulcoside A
11	14.005		0.0000	0.00000	0.0000	rubusoside
12	19.549		0.0000	0.00000	0.0000	rebaudioside B
13	20.995		0.0000	0.00000	0.0000	steviolbioside

Totals : 640.61017

2 Warnings or Errors :

Warning : Calibration warnings (see calibration table listing)

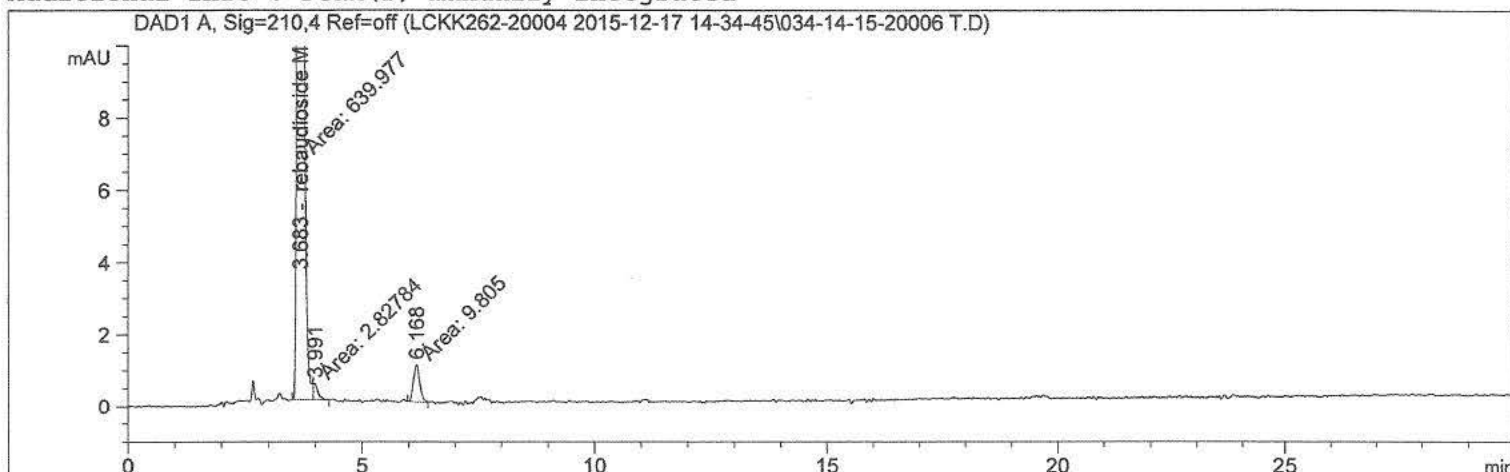
Warning : Calibrated compound(s) not found

*** End of Report ***

```

=====
Acq. Operator   :                               Seq. Line :   34
Acq. Instrument : HPLC-05                      Location  :   14
Injection Date  : 12/18/2015 8:20:18 AM         Inj       :    1
                                           Inj Volume: 5.000 µl
Acq. Method     : D:\Chem32\4\Data\LCKK262-20004 2015-12-17 14-34-45\LCKK262.M
Last changed    : 12/18/2015 3:02:17 AM by
Analysis Method : D:\Chem32\4\Data\LCKK262-20004 2015-12-17 14-34-45\LCKK262.M (Sequence
Method)
Last changed    : 12/22/2015 12:35:59 PM by
Method Info     : JECFA kk262

ECM Server      : http://us05apvp001/ecmwg
ECM Operator    :
ECM Path        : \Petaluma\LC\HPLC-05\Data\LCKK262-20004 2015-12-17 14-34-45.SC.SSIzip
ECM Version     : 7 (modified after loading)
Additional Info  : Peak(s) manually integrated
  
```



Area Percent Report

```

=====
Sorted By      :      Signal
Calib. Data Modified :      Tuesday, December 22, 2015 7:55:11 AM
Multiplier     :      1.0000
Dilution       :      40.0000
Sample Amount:      :      32.10000 [mg/ml] (not used in calc.)
Do not use Multiplier & Dilution Factor with ISTDs
  
```

Signal 1: DAD1 A, Sig=210.4 Ref=off

Peak #	RetTime [min]	Type	Width [min]	Area [mAU*s]	Area %	Name
1	3.322		0.0000	0.00000	0.0000	rebaudioside D
2	3.683	MF	0.1042	639.97705	98.0643	rebaudioside M
3	3.991	FM	0.1069	2.82784	0.4333	?
4	6.168	MM	0.1582	9.80500	1.5024	?
5	6.904		0.0000	0.00000	0.0000	rebaudioside A
6	7.339		0.0000	0.00000	0.0000	stevioside
7	8.764		0.0000	0.00000	0.0000	rebaudioside F
8	9.625		0.0000	0.00000	0.0000	rebaudioside C
9	10.521		0.0000	0.00000	0.0000	dulcoside A

Peak #	RetTime [min]	Type	Width [min]	Area [mAU*s]	Area %	Name
10	14.005		0.0000	0.00000	0.0000	rubusoside
11	19.549		0.0000	0.00000	0.0000	rebaudioside B
12	20.995		0.0000	0.00000	0.0000	steviolbioside

Totals : 652.60989

2 Warnings or Errors :

Warning : Calibration warnings (see calibration table listing)

Warning : Calibrated compound(s) not found

=====
*** End of Report ***

Sample Name: 15-20007

```

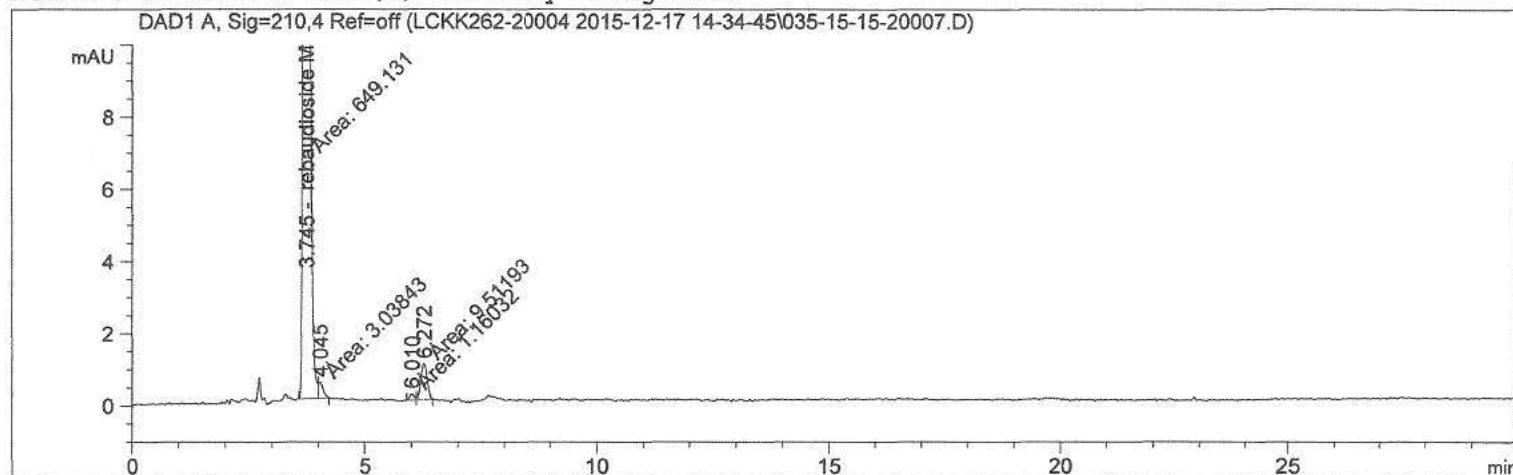
=====
Acq. Operator   :                               Seq. Line :   35
Acq. Instrument : HPLC-05                      Location  :   15
Injection Date  : 12/18/2015 8:51:59 AM         Inj       :    1
                                           Inj Volume: 5.000 µl
Acq. Method     : D:\Chem32\4\Data\LCKK262-20004 2015-12-17 14-34-45\LCKK262.M
Last changed    : 12/18/2015 3:02:17 AM by
Analysis Method : D:\Chem32\4\Data\LCKK262-20004 2015-12-17 14-34-45\LCKK262.M (Sequence
Method)
Last changed    : 12/22/2015 12:35:59 PM by
Method Info     : JECFA kk262

```

```

ECM Server      : http://us05apvp001/ecmwg
ECM Operator    :
ECM Path        : \Petaluma\LC\HPLC-05\Data\LCKK262-20004 2015-12-17 14-34-45.SC.SSIzip
ECM Version     : 7 (modified after loading)
Additional Info : Peak(s) manually integrated

```



Area Percent Report

```

Sorted By      : Signal
Calib. Data Modified : Tuesday, December 22, 2015 7:55:11 AM
Multiplier     : 1.0000
Dilution       : 40.0000
Sample Amount  : 31.78000 [mg/ml] (not used in calc.)
Do not use Multiplier & Dilution Factor with ISTDs

```

Signal 1: DAD1 A, Sig=210,4 Ref=off

Peak #	RetTime [min]	Type	Width [min]	Area [mAU*s]	Area %	Name	Average	Std Dev	%RSD
1	3.322		0.0000	0.00000	0.0000	rebaudioside D			
2	3.745	MF	0.1054	649.13104	97.9315	rebaudioside M	97.988	0.058369	0.059567
3	4.045	FM	0.1161	3.03843	0.4584	?		0.058369	
4	6.010	MF	0.1141	1.16032	0.1751	?		0.058369	
5	6.272	FM	0.1593	9.51193	1.4350	?		0.058369	
6	6.904		0.0000	0.00000	0.0000	rebaudioside A			
7	7.339		0.0000	0.00000	0.0000	stevioside			
8	8.764		0.0000	0.00000	0.0000	rebaudioside F			
9	9.625		0.0000	0.00000	0.0000	rebaudioside C			

Sample Name: 15-20007

Peak #	RetTime [min]	Type	Width [min]	Area [mAU*s]	Area %	Name
10	10.521		0.0000	0.00000	0.0000	dulcoside A
11	14.005		0.0000	0.00000	0.0000	rubusoside
12	19.549		0.0000	0.00000	0.0000	rebaudioside B
13	20.995		0.0000	0.00000	0.0000	steviolbioside

Totals : 662.84172

2 Warnings or Errors :

Warning : Calibration warnings (see calibration table listing)

Warning : Calibrated compound(s) not found

*** End of Report ***

Sample Name: 15-20007 D

```

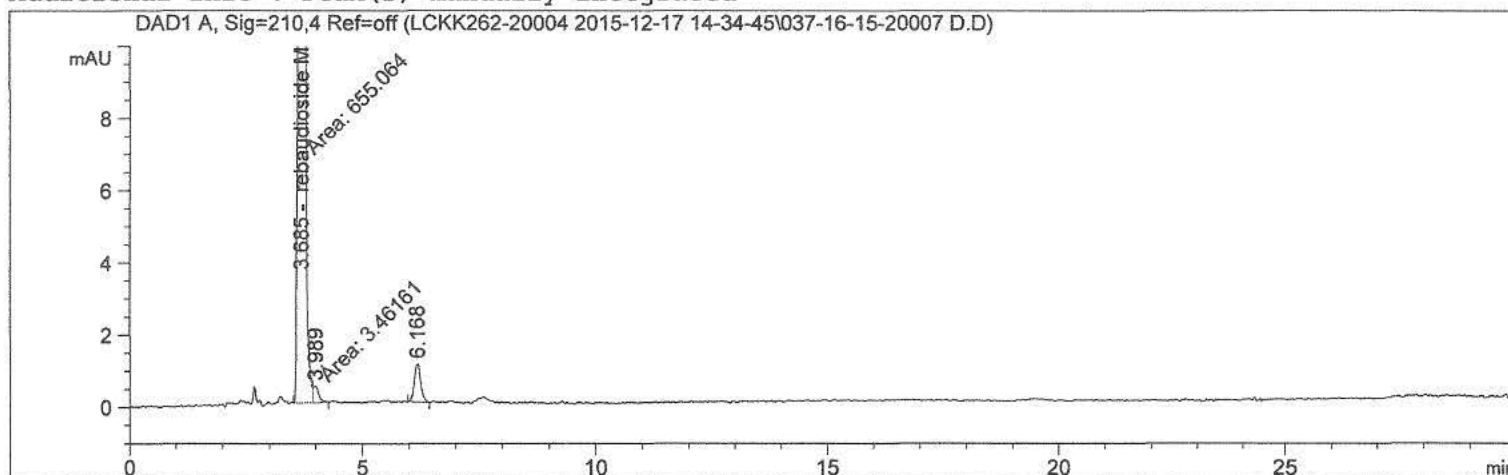
=====
Acq. Operator   :                               Seq. Line :   37
Acq. Instrument : HPLC-05                      Location  :   16
Injection Date  : 12/18/2015 9:55:15 AM         Inj       :    1
                                           Inj Volume: 5.000 µl
Acq. Method     : D:\Chem32\4\Data\LCKK262-20004 2015-12-17 14-34-45\LCKK262.M
Last changed    : 12/18/2015 3:02:17 AM by
Analysis Method : D:\Chem32\4\Data\LCKK262-20004 2015-12-17 14-34-45\LCKK262.M (Sequence
                  Method)
Last changed    : 12/22/2015 12:35:59 PM by
Method Info     : JECFA kk262

```

```

ECM Server      : http://us05apvp001/ecmwg
ECM Operator    :
ECM Path        : \Petaluma\LC\HPLC-05\Data\LCKK262-20004 2015-12-17 14-34-45.SC.SSIzip
ECM Version     : 7 (modified after loading)
Additional Info : Peak(s) manually integrated

```



```

=====
                        Area Percent Report
=====

```

```

Sorted By      :      Signal
Calib. Data Modified :      Tuesday, December 22, 2015 7:55:11 AM
Multiplier     :      1.0000
Dilution       :      40.0000
Sample Amount:      :      32.32000 [mg/ml] (not used in calc.)
Do not use Multiplier & Dilution Factor with ISTDs

```

Signal 1: DAD1 A, Sig=210,4 Ref=off

Peak #	RetTime [min]	Type	Width [min]	Area [mAU*s]	Area %	Name
1	3.322		0.0000	0.00000	0.0000	rebaudioside D
2	3.685	MF	0.1042	655.06360	97.9849	rebaudioside M
3	3.989	FM	0.1283	3.46161	0.5178	?
4	6.168	BB	0.1505	10.00977	1.4973	?
5	6.904		0.0000	0.00000	0.0000	rebaudioside A
6	7.339		0.0000	0.00000	0.0000	stevioside
7	8.764		0.0000	0.00000	0.0000	rebaudioside F
8	9.625		0.0000	0.00000	0.0000	rebaudioside C
9	10.521		0.0000	0.00000	0.0000	dulcoside A

Peak #	RetTime [min]	Type	Width [min]	Area [mAU*s]	Area %	Name
10	14.005		0.0000	0.00000	0.0000	rubusoside
11	19.549		0.0000	0.00000	0.0000	rebaudioside B
12	20.995		0.0000	0.00000	0.0000	steviolbioside

Totals : 668.53498

2 Warnings or Errors :

Warning : Calibration warnings (see calibration table listing)
Warning : Calibrated compound(s) not found

=====
*** End of Report ***

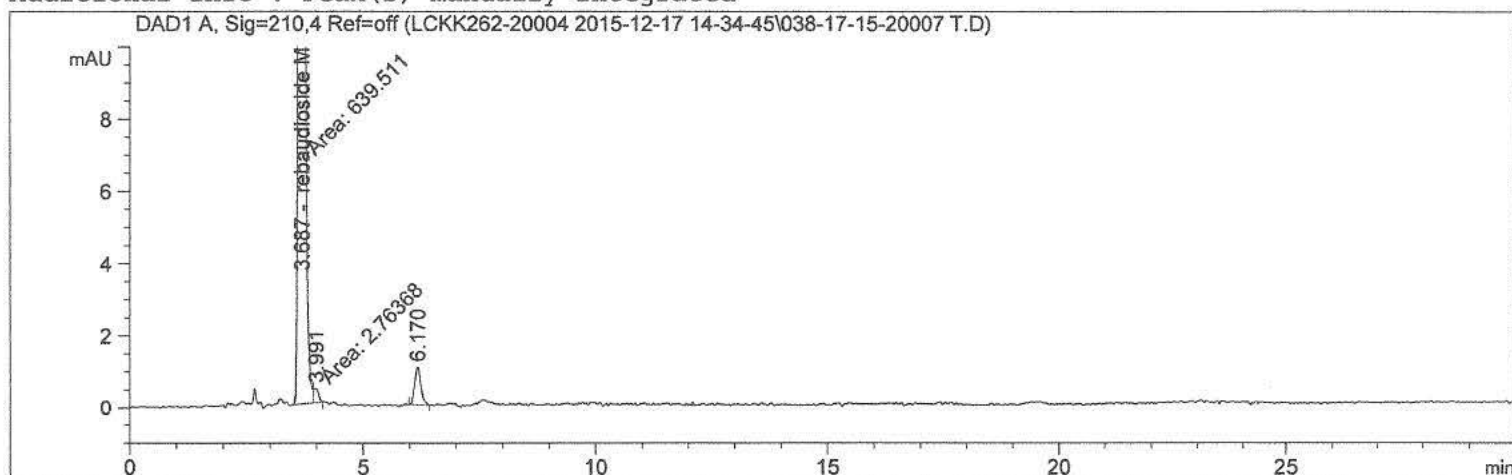
Sample Name: 15-20007 T

```

=====
Acq. Operator   :                               Seq. Line :   38
Acq. Instrument : HPLC-05                       Location  :   17
Injection Date  : 12/18/2015 10:26:57 AM         Inj       :    1
                                           Inj Volume: 5.000 µl
Acq. Method     : D:\Chem32\4\Data\LCKK262-20004 2015-12-17 14-34-45\LCKK262.M
Last changed    : 12/18/2015 3:02:17 AM by
Analysis Method : D:\Chem32\4\Data\LCKK262-20004 2015-12-17 14-34-45\LCKK262.M (Sequence
Method)
Last changed    : 12/22/2015 12:35:59 PM by
Method Info     : JECFA kk262
  
```

```

ECM Server      : http://us05apvp001/ecmwg
ECM Operator    :
ECM Path        : \Petaluma\LC\HPLC-05\Data\LCKK262-20004 2015-12-17 14-34-45.SC.SSIzip
ECM Version     : 7 (modified after loading)
Additional Info  : Peak(s) manually integrated
  
```



```

=====
                          Area Percent Report
=====
  
```

```

Sorted By      :      Signal
Calib. Data Modified :      Tuesday, December 22, 2015 7:55:11 AM
Multiplier     :      1.0000
Dilution       :      40.0000
Sample Amount:      :      32.04000 [mg/ml] (not used in calc.)
Do not use Multiplier & Dilution Factor with ISTDs
  
```

Signal 1: DAD1 A, Sig=210,4 Ref=off

Peak #	RetTime [min]	Type	Width [min]	Area [mAU*s]	Area %	Name
1	3.322		0.0000	0.00000	0.0000	rebaudioside D
2	3.687	MF	0.1042	639.51129	98.0481	rebaudioside M
3	3.991	FM	0.1146	2.76368	0.4237	?
4	6.170	BB	0.1349	9.96771	1.5282	?
5	6.904		0.0000	0.00000	0.0000	rebaudioside A
6	7.339		0.0000	0.00000	0.0000	stevioside
7	8.764		0.0000	0.00000	0.0000	rebaudioside F
8	9.625		0.0000	0.00000	0.0000	rebaudioside C
9	10.521		0.0000	0.00000	0.0000	dulcoside A

Peak #	RetTime [min]	Type	Width [min]	Area [mAU*s]	Area %	Name
10	14.005		0.0000	0.00000	0.0000	rubusoside
11	19.549		0.0000	0.00000	0.0000	rebaudioside B
12	20.995		0.0000	0.00000	0.0000	steviolbioside

Totals : 652.24268

2 Warnings or Errors :

Warning : Calibration warnings (see calibration table listing)

Warning : Calibrated compound(s) not found

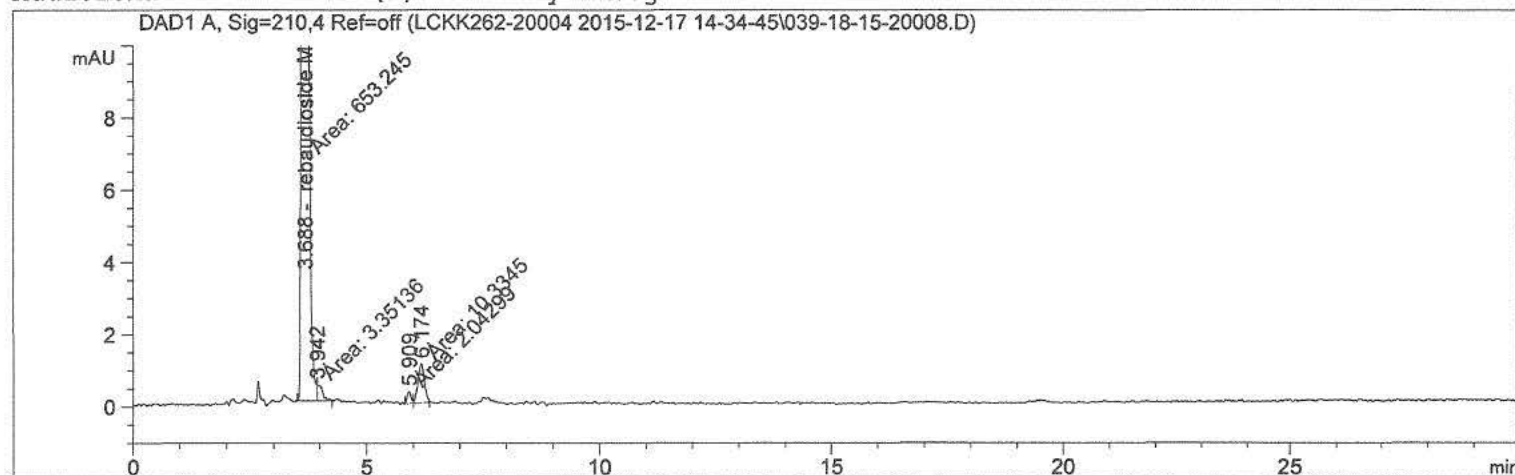
=====
*** End of Report ***

Sample Name: 15-20008

```
=====
Acq. Operator   :                               Seq. Line :   39
Acq. Instrument : HPLC-05                       Location  :   18
Injection Date  : 12/18/2015 10:58:45 AM         Inj       :    1
                                                Inj Volume: 5.000 µl

Acq. Method     : D:\Chem32\4\Data\LCKK262-20004 2015-12-17 14-34-45\LCKK262.M
Last changed    : 12/18/2015 3:02:17 AM by
Analysis Method : D:\Chem32\4\Data\LCKK262-20004 2015-12-17 14-34-45\LCKK262.M (Sequence
Method)
Last changed    : 12/22/2015 12:35:59 PM by
Method Info     : JECFA kk262

ECM Server      : http://us05apvp001/ecmwg
ECM Operator    :
ECM Path        : \Petaluma\LC\HPLC-05\Data\LCKK262-20004 2015-12-17 14-34-45.SC.SSIzip
ECM Version     : 7 (modified after loading)
Additional Info  : Peak(s) manually integrated
=====
```



Area Percent Report

```
=====
Sorted By      : Signal
Calib. Data Modified : Tuesday, December 22, 2015 7:55:11 AM
Multiplier     : 1.0000
Dilution       : 40.0000
Sample Amount   : 32.70000 [mg/ml] (not used in calc.)
Do not use Multiplier & Dilution Factor with ISTDs
=====
```

Signal 1: DAD1 A, Sig=210,4 Ref=off

Peak #	RetTime [min]	Type	Width [min]	Area [mAU*s]	Area %	Name	Average	Std Dev	T.R.S.D
1	3.322		0.0000	0.00000	0.0000	rebaudioside D	97.770	0.26739	0.27348
2	3.688	MF	0.1041	653.24451	97.6488	rebaudioside M	97.784	0.29159	0.29820
3	3.942	FM	0.1233	3.35136	0.5010	?			0.514
4	5.909	MF	0.1012	2.04299	0.3054	?			0.3054
5	6.174	FM	0.1595	10.33447	1.5448	?			1.5448
6	6.904		0.0000	0.00000	0.0000	rebaudioside A			
7	7.339		0.0000	0.00000	0.0000	stevioside			
8	8.764		0.0000	0.00000	0.0000	rebaudioside F			
9	9.625		0.0000	0.00000	0.0000	rebaudioside C			

Sample Name: 15-20008

Peak #	RetTime [min]	Type	Width [min]	Area [mAU*s]	Area %	Name
10	10.521		0.0000	0.00000	0.0000	dulcoside A
11	14.005		0.0000	0.00000	0.0000	rubusoside
12	19.549		0.0000	0.00000	0.0000	rebaudioside B
13	20.995		0.0000	0.00000	0.0000	steviolbioside

Totals : 668.97333

2 Warnings or Errors :

Warning : Calibration warnings (see calibration table listing)

Warning : Calibrated compound(s) not found

*** End of Report ***

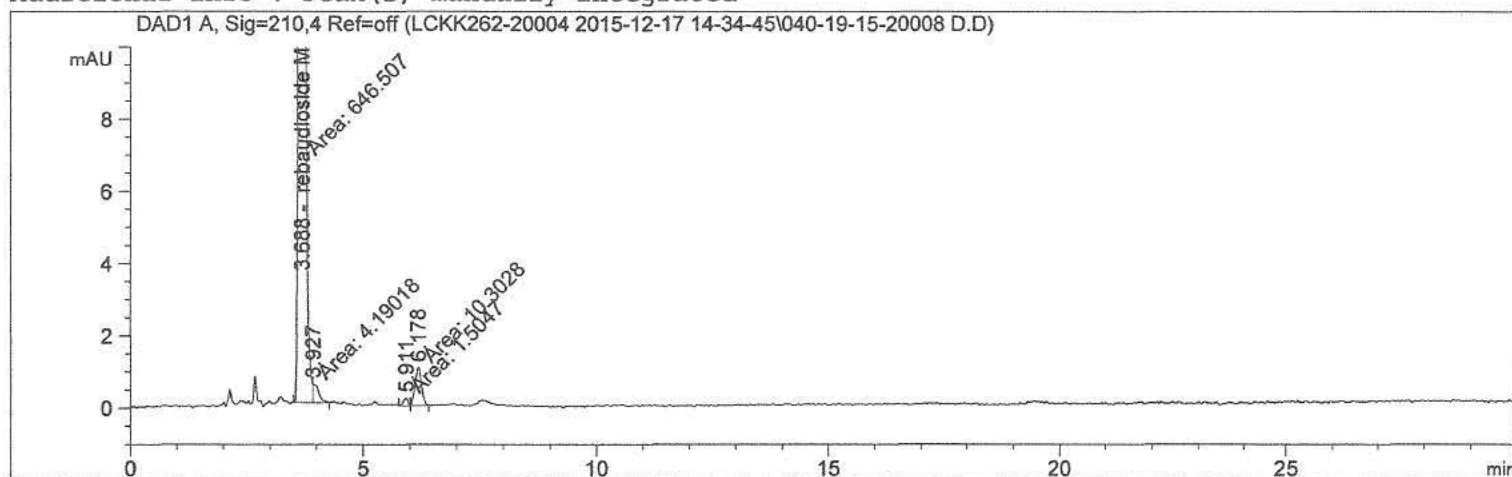
Sample Name: 15-20008 D

```

=====
Acq. Operator   :                               Seq. Line :   40
Acq. Instrument : HPLC-05                       Location  :   19
Injection Date  : 12/18/2015 11:30:31 AM         Inj       :    1
                                                Inj Volume: 5.000 µl
Acq. Method     : D:\Chem32\4\Data\LCKK262-20004 2015-12-17 14-34-45\LCKK262.M
Last changed    : 12/18/2015 3:02:17 AM by
Analysis Method : D:\Chem32\4\Data\LCKK262-20004 2015-12-17 14-34-45\LCKK262.M (Sequence
                  Method)
Last changed    : 12/22/2015 12:35:59 PM by
Method Info     : JECFA kk262
  
```

```

ECM Server      : http://us05apvp001/ecmwg
ECM Operator    :
ECM Path        : \Petaluma\LC\HPLC-05\Data\LCKK262-20004 2015-12-17 14-34-45.SC.SSIzip
ECM Version     : 7 (modified after loading)
Additional Info : Peak(s) manually integrated
  
```



```

=====
                          Area Percent Report
=====
  
```

```

Sorted By      :      Signal
Calib. Data Modified :      Tuesday, December 22, 2015 7:55:11 AM
Multiplier     :      1.0000
Dilution       :      40.0000
Sample Amount:      :      32.46000 [mg/ml]      (not used in calc.)
Do not use Multiplier & Dilution Factor with ISTDs
  
```

Signal 1: DAD1 A, Sig=210,4 Ref=off

Peak #	RetTime [min]	Type	Width [min]	Area [mAU*s]	Area %	Name
1	3.322		0.0000	0.00000	0.0000	rebaudioside D
2	3.688	MF	0.1042	646.50708	97.5853	rebaudioside M
3	3.927	FM	0.1347	4.19018	0.6325	?
4	5.911	MF	0.1150	1.50470	0.2271	?
5	6.178	FM	0.1617	10.30280	1.5551	?
6	6.904		0.0000	0.00000	0.0000	rebaudioside A
7	7.339		0.0000	0.00000	0.0000	stevioside
8	8.764		0.0000	0.00000	0.0000	rebaudioside F
9	9.625		0.0000	0.00000	0.0000	rebaudioside C

Peak #	RetTime [min]	Type	Width [min]	Area [mAU*s]	Area %	Name
10	10.521		0.0000	0.00000	0.0000	dulcoside A
11	14.005		0.0000	0.00000	0.0000	rubusoside
12	19.549		0.0000	0.00000	0.0000	rebaudioside B
13	20.995		0.0000	0.00000	0.0000	steviolbioside

Totals : 662.50476

2 Warnings or Errors :

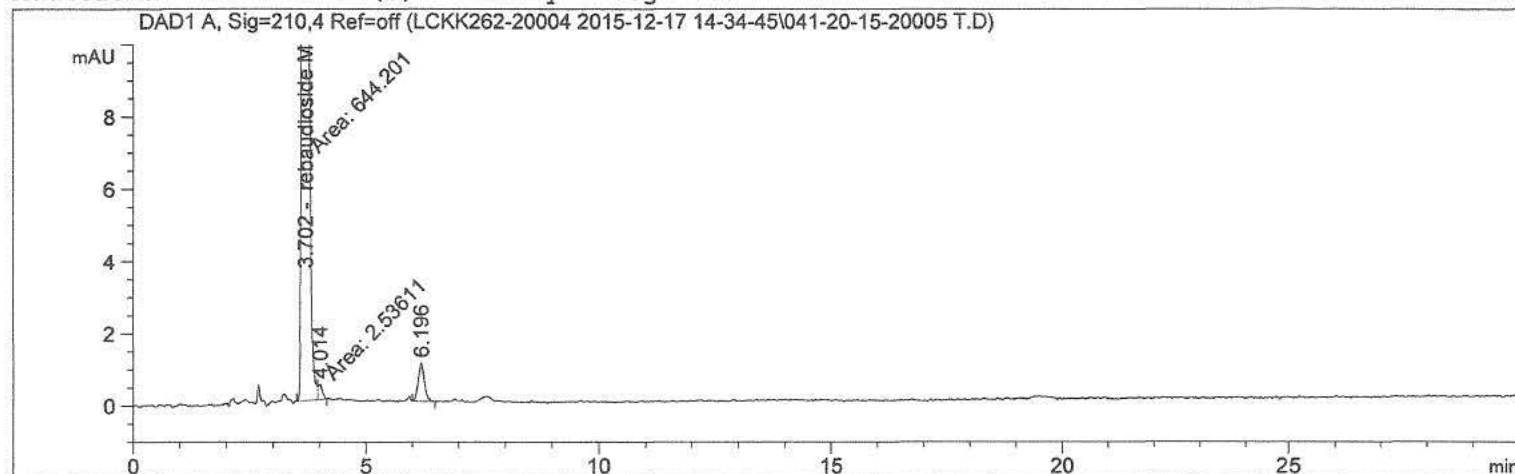
Warning : Calibration warnings (see calibration table listing)

Warning : Calibrated compound(s) not found

*** End of Report ***

```
=====
Acq. Operator   :                               Seq. Line :   41
Acq. Instrument : HPLC-05                       Location  :   20
Injection Date  : 12/18/2015 12:02:11 PM         Inj       :    1
                                                Inj Volume: 5.000 µl
Acq. Method     : D:\Chem32\4\Data\LCKK262-20004 2015-12-17 14-34-45\LCKK262.M
Last changed    : 12/18/2015 3:02:17 AM by
Analysis Method : D:\Chem32\4\Data\LCKK262-20004 2015-12-17 14-34-45\LCKK262.M (Sequence
                  Method)
Last changed    : 12/22/2015 12:35:59 PM by
Method Info     : JECFA kk262
=====
```

```
ECM Server      : http://us05apvp001/ecmwg
ECM Operator    :
ECM Path        : \Petaluma\LC\HPLC-05\Data\LCKK262-20004 2015-12-17 14-34-45.SC.SSIzip
ECM Version     : 9 (modified after loading)
Additional Info : Peak(s) manually integrated
=====
```



Area Percent Report

```
=====
Sorted By      : Signal
Calib. Data Modified : Tuesday, December 22, 2015 7:55:11 AM
Multiplier     : 1.0000
Dilution       : 40.0000
Sample Amount   : 32.72000 [mg/ml] (not used in calc.)
Do not use Multiplier & Dilution Factor with ISTDs
=====
```

Signal 1: DAD1 A, Sig=210,4 Ref=off

Peak #	RetTime [min]	Type	Width [min]	Area [mAU*s]	Area %	Name
1	3.322		0.0000	0.00000	0.0000	rebaudioside D
2	3.702	MF	0.1038	644.20135	98.0769	rebaudioside M
3	4.014	FM	0.1006	2.53611	0.3861	?
4	6.196	BB	0.1491	10.09550	1.5370	?
5	6.904		0.0000	0.00000	0.0000	rebaudioside A
6	7.339		0.0000	0.00000	0.0000	stevioside
7	8.764		0.0000	0.00000	0.0000	rebaudioside F
8	9.625		0.0000	0.00000	0.0000	rebaudioside C
9	10.521		0.0000	0.00000	0.0000	dulcoside A

Peak #	RetTime [min]	Type	Width [min]	Area [mAU*s]	Area %	Name
10	14.005		0.0000	0.00000	0.0000	rubusoside
11	19.549		0.0000	0.00000	0.0000	rebaudioside B
12	20.995		0.0000	0.00000	0.0000	steviolbioside

Totals : 656.83296

2 Warnings or Errors :

Warning : Calibration warnings (see calibration table listing)

Warning : Calibrated compound(s) not found

=====
*** End of Report ***